

iPad Picture Settings

Loudness Films

version 1.0

(based on Netflix settings)

february 2023

Setting up an iPad Pro for Creative Reviews

Below are some best practice steps for setting up an iPad Pro for Creative Reviews. iPad's are generally calibrated out of the box with minimal changes, but the below settings are important to turn off (True Tone, Night Shift, Auto-Brightness) in order to provide consistency for each review.

Initial Setup

- Please make sure you have an iPad Pro (2018 or newer, in simpler terms - an iPad Pro without the physical home button.) The model number can be found on the back cover and then checked here on the Apple website.



Display / Brightness Settings

In order to achieve the best picture and closest to creative intent on the iPad, the following settings must be set:

True Tone should be turned **OFF**

Night Shift should be turned **OFF**

Adaptive / Auto Brightness should be turned **OFF**

Brightness slider set to:

For both HDR or SDR, it is recommended that the colorist looks at an iPad Pro alongside the reference monitor, while playing the content to be reviewed, in order to come up with a base recommendation of a brightness slider setting.

If having the colorist do this comparison is not an option, based on our experience:

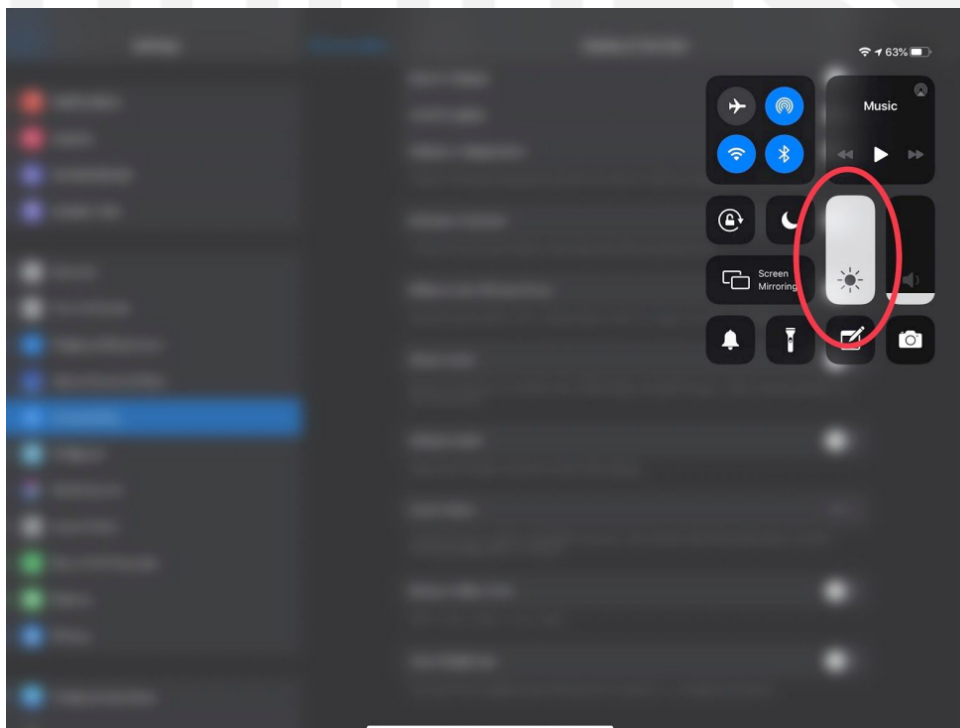
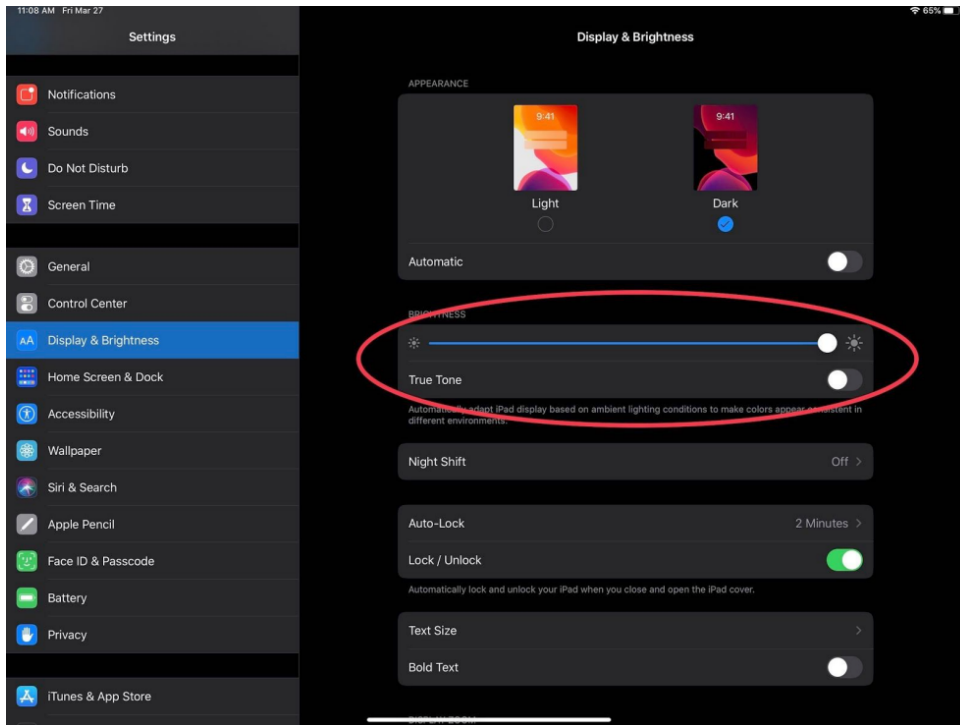
SDR: The brightness slider can be set to 50%.

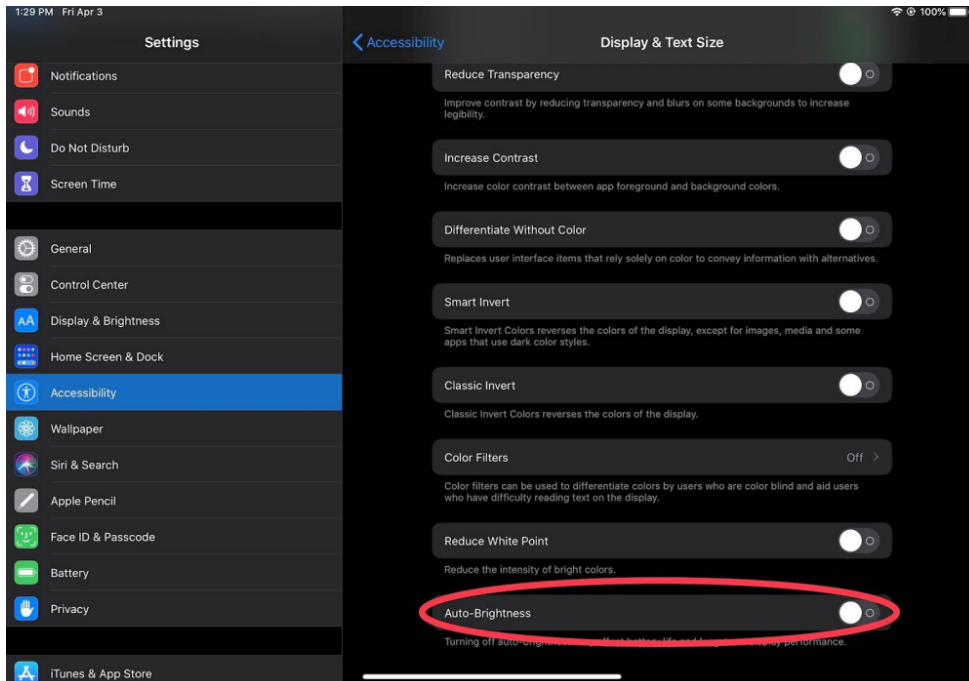
HDR: Depending on the ambient light level of the viewing environment, the brightness slider can be adjusted between 50% (dark room) and 100% (bright room). There may be variability in HDR brightness setting based on the content.

Under **Settings** on your iPad Pro please go to the **Display & Brightness** menu and set 'True Tone' to OFF and set 'Night Shift' to be OFF. Under **Accessibility > Auto-Brightness** should be turned OFF.

Lastly, set the 'Brightness' appropriately based on SDR or HDR viewing.

See pictures of these settings below.





iPad Pro Security Best Practices

- Use a passcode (6 digit minimum) and/or biometric controls (TouchID, FaceID) for access.
Settings>FaceID & Passcode>Turn Passcode On>Set an Alphanumeric code
- Enable 'Find My' functionality. This is available on iOS and it helps locate and/or wipe a missing device
Settings>Apple ID>Find My>turn on "Find My Phone"
- Do not use any App Stores other than the official Apple App Store.